



GENSET STORAGE CART



ORAGE SOLUTIONS • THE MOST RESPECTED N... MINIMUM STORAGE SOLUTIONS • THE MOST RESPECT



GENSET STANDARD STORAGE

- Cummins Onan 7kw (@ 67 decibels)
- 4 Cycle, OHV 90° V-Twin
- 7 - 110V outlets
2 - 240V outlet (NEMA 4-30R)
- Remote start and stop switch
- Built in tie downs
- Additional Storage

ONLY FROM CTECH

BadAss™ CASTERS

2000lb load per caster



ONLY FROM CTECH
MotionLatch™
Drawer & Door System
US Patent 6,547,289

Dry Weight: 825lbs
Generator Weight: 420lbs
GenSet Cart Weight: 405lbs

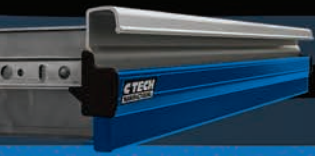


I was surprised that my mobile GenSet rolled so easily on dirt, over rocks and through ruts in the ground. The Bad Ass Casters let it roll with ease on these surfaces while maintaining stability. The GenSet Cart is amazing for night races, giving us the mobile power we need to light our pits, power our tools and charge batteries. CTECH Manufacturing was able to customize the cart to my needs and the sales staff was easy to work with.

Robert Kitterman - Dover St Motorsports



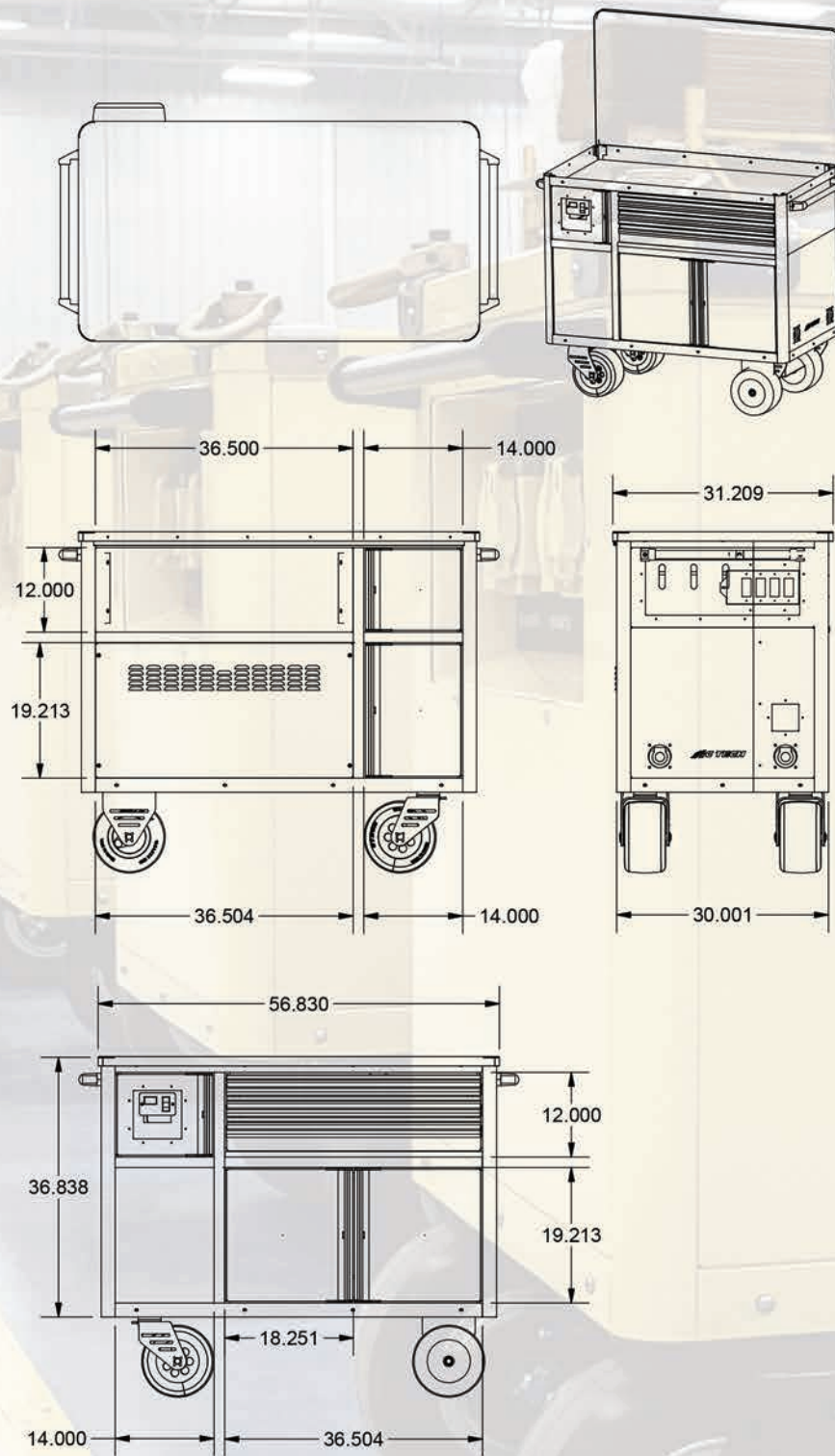
STANDARD FEATURES: Lightweight All Aluminum Construction - MotionLatch™ doors - Extruded Aluminum Radius Corners
Tough Powder Coat Finish - 1/8" Aluminum Top - Heavy Duty Pull Handles



GENSET STORAGE CART



ORAGE SOLUTIONS • THE MOST RESPECTED NAME IN MOBILE ALUMINUM STORAGE SOLUTIONS • THE MOST RESPECTED



Proprietary Notice

This drawing and the text, design, and concepts herein are the property of CTECH Trailer Cabinets, a division of Greenheck Racing. Any reproduction, distribution, or forwarding of this document to persons or organizations for any reason without written permission from CTECH is prohibited.